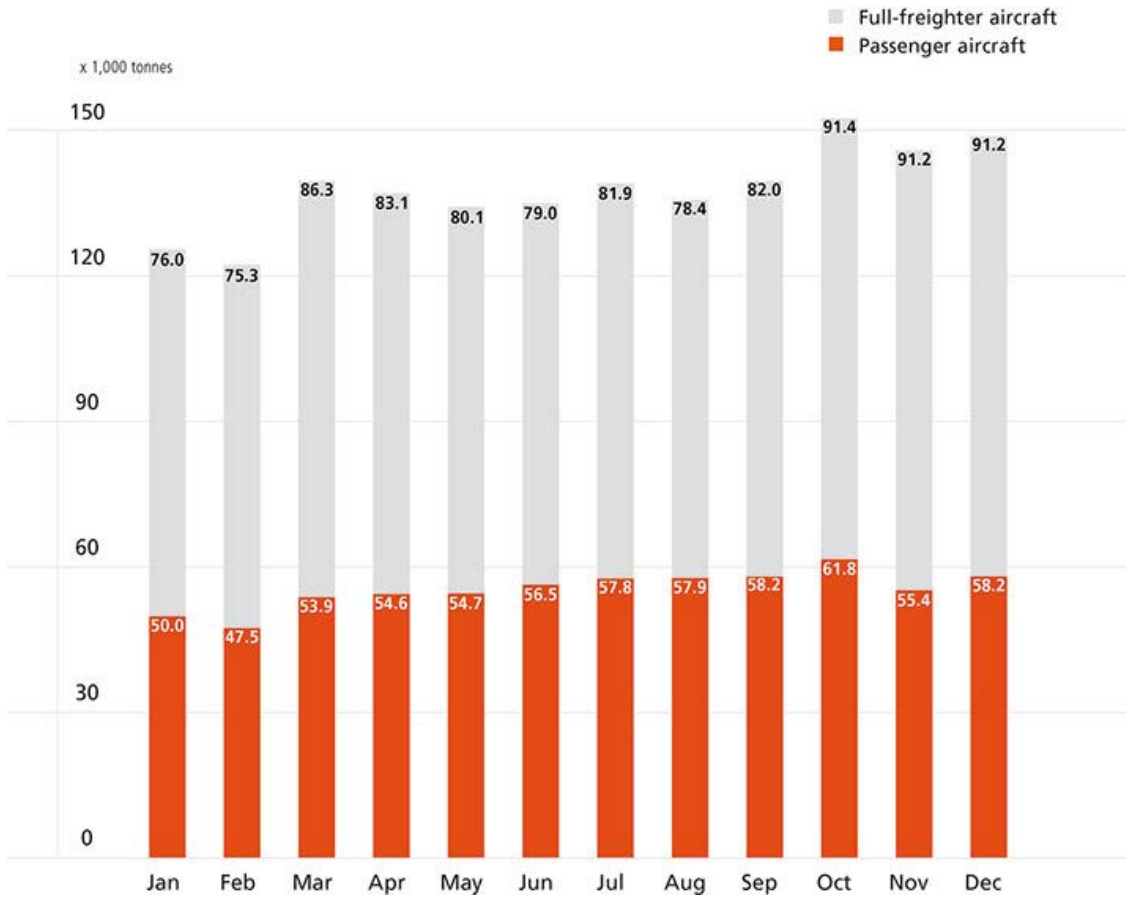




In 2016 the freight volume increased by +2.5% to nearly 1.7 million tonnes. Volume increased both on full freighter and passenger services.

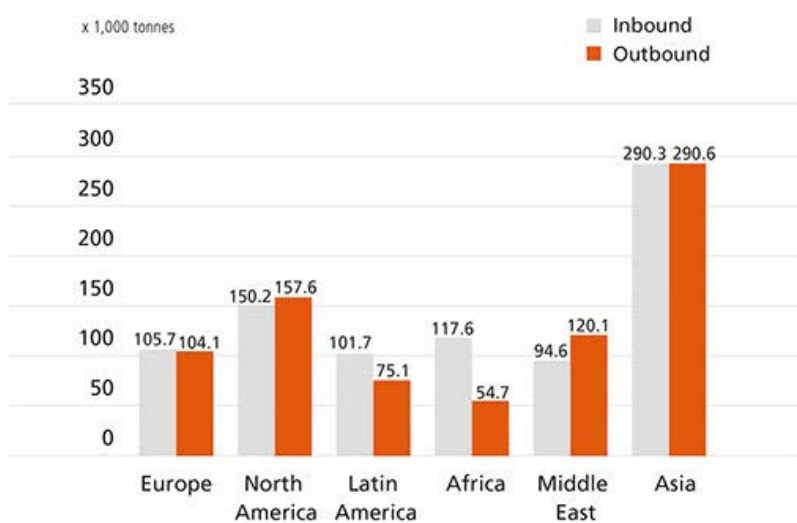


Monthly totals per aircraft type



Annual totals by continent

Annual totals 2016



Total air transport

	2016	Compared to 2015 in %
Total	1,662.3	2.5%
Passenger services	666.5	2.0%
Full-freighter services	995.8	2.9%
Inbound	860.1	4.4%
Outbound	802.2	0.6%

Freight, main origins and destinations

Ranking	(2015 ranking)	Airport	IATA code	2016 in tonnes	Compared to 2015 in %
1	(1)	Shanghai	PVG	172,023	- 5.2%
2	(2)	Nairobi	NBO	91,889	0.1%
3	(7)	Moscow	SVO	74,643	63.0%
4	(4)	Doha	DOH	67,856	14.4%
5	(5)	Chicago	ORD	57,032	- 0.7%
6	(6)	Singapore	SIN	53,451	6.4%
7	(3)	Hong Kong	HKG	43,575	- 33.9%
8	(14)	Guangzhou	CAN	43,256	21.3%
9	(13)	Quito	UIO	40,982	10.5%
10	(12)	Seoul	ICN	39,278	5.1%
11	(8)	Jeddah	JED	39,111	- 10.3%
12	(10)	Miami	MIA	37,427	- 5.9%
13	(9)	Tokyo	NRT	36,698	- 8.4%
14	(15)	Abu Dhabi	AUH	36,276	4.7%
15	(16)	New York	JFK	32,042	- 6.2%
16	(-)	Baku	GYD	28,710	-
17	(21)	Taipei	TPE	28,103	1.2%
18	(18)	Houston	IAH	28,098	- 5.0%
19	(24)	Los Angeles	LAX	28,016	28.3%
20	(20)	Beijing	PEK	27,055	- 2.9%

Annual totals by aircraft type

